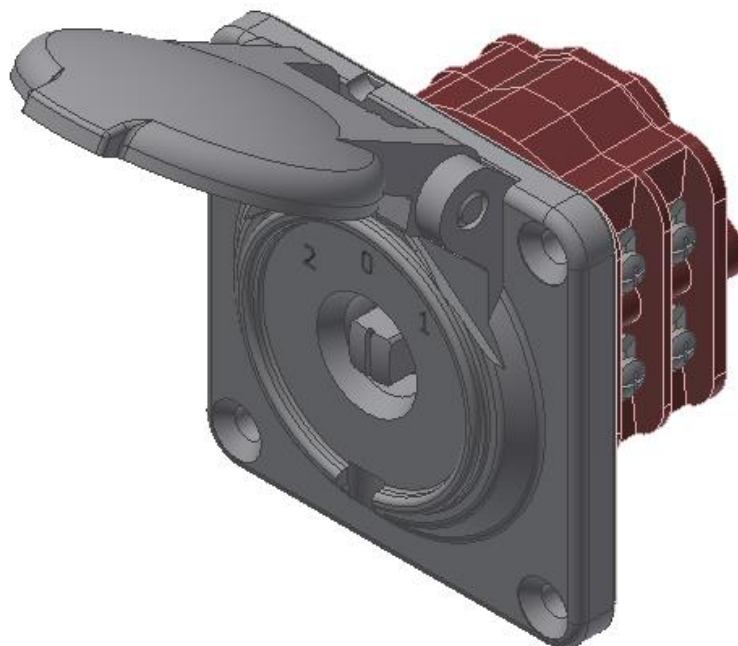


Cam switch



1	Main features, use	2
2	Technical data	2
3	Storage	2
4	Drawings	2
5	Key switch	3
5.1	Key switch with hinged cover for outdoor application	3
5.2	Key switch with rosette for indoor application	5
6	Manual switch	8
6.1	Mounting options	9
6.2	Handle variants	10
7	Special versions	11



1 Main features, use

Cam switches are used to interrupt or close circuits. The contacts in our switches have the following features: Double break, positive opening, self-cleaning and bounce-free. If required, they can be equipped with double contacts (H-contact). A wide range of operating element designs is available, such as wing or toggle handle, 8x8mm square spanner, KABA spanner, etc.

2 Technical data

- Switching angle 30° / 36° / 45° / 90°
- Positions latching or momentary
- Number of contacts up to 24
- Terminal designation according to customer requirements
- Contact material silver (gold contacts on request)
- Contact load for ohmic load:
 - 500VAC 36VDC 20mA- 6A rubbing contacts
 - 500VAC 30VDC 16A fixed contacts
 - 500VAC 36VDC 4mA - 2A H-contacts
 - 110VDC voltage on request
- Fire protection EN45545 R26
- Max. Torque on stop 10 Nm
- Mech. Mechanical life 100,000 operations
- Connection terminals Max. 2 cables with 1 to 2.5 mm² cross-section per terminal.
- Tightening torque of the screw 60 Ncm.
- Faston connections possible
- Temperature range Operation -40°C ... +70°C
- Storage -50°C ... +70°C
- Protection class IP 51 Condensation-proof (For switches with hinged cover)

3 Storage

The cam switches must be stored in a dry place and protected from dust.

4 Drawings

A dimensional drawing containing the following information is created for each cam switch:

Electrical diagram
Latching and shearing matrix
Drilling plan or mounting opening
Fabrication number
Type designation

For each switch type, there is a template for the customer's design

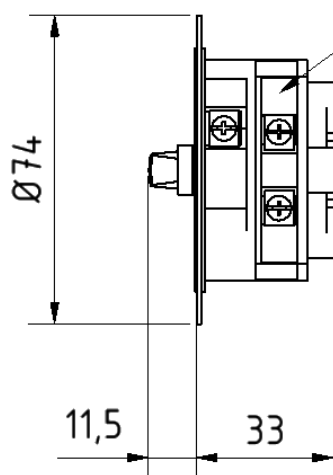
5 Key switch

5.1 Key switch with hinged cover for outdoor application

Key actuation 4kt 8x8

optionally possible 4kt 8x8 reinforced
3kt 6.9mm, half-round 13mm, Southco tube

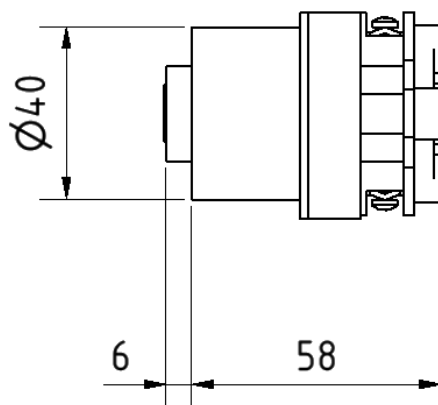
Terminal designation
according to
customer requirements



Length 23 + number of elements x 10mm
= 33mm for one element

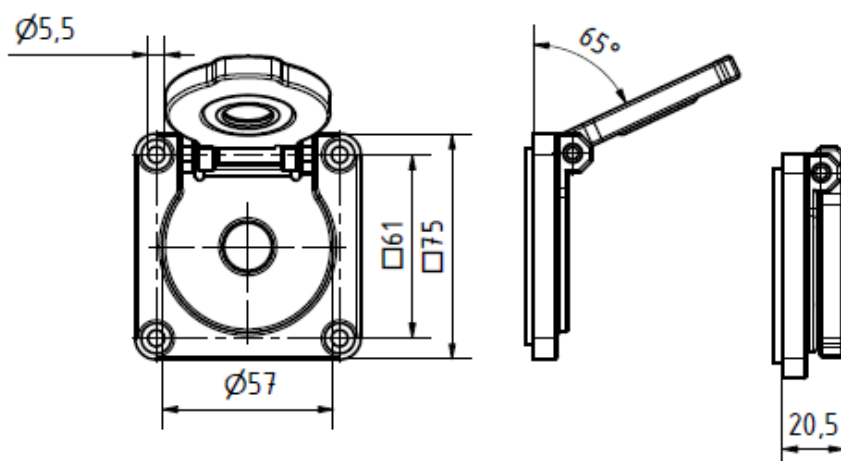
Key actuation KABA 1008C/25

optionally possible KESO, SEA, IKON, EVVA, DOM

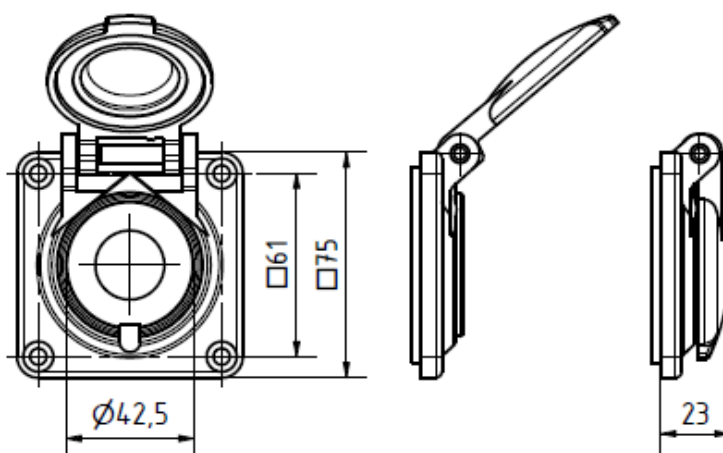
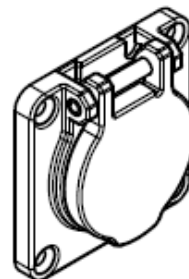


Length 48 + number of elements x 10mm
= 58mm for one element

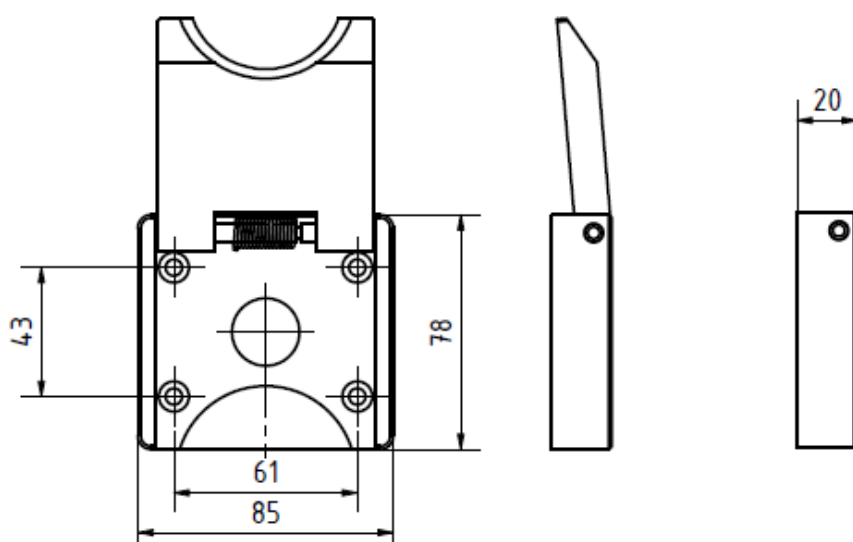
Switch can be combined with all hinged lids



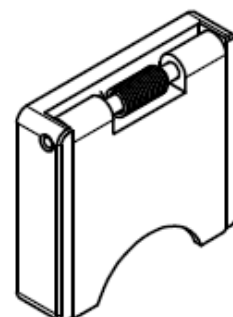
Hinged cover BDSE
Opening limitation 65°



Hinged cover BDS
No opening limitation



Hinged cover BDSV
No opening limitation



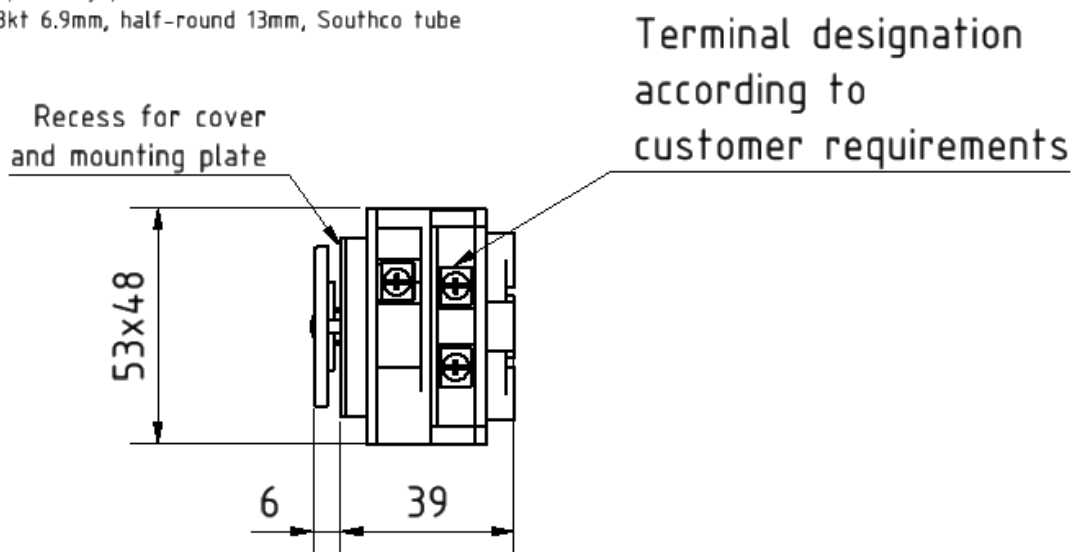
Hinged lid painted according to customer requirements

Laser engraving of the position according to customer requirements

5.2 Key switch with rosette for indoor application

Key actuation 4kt 8x8

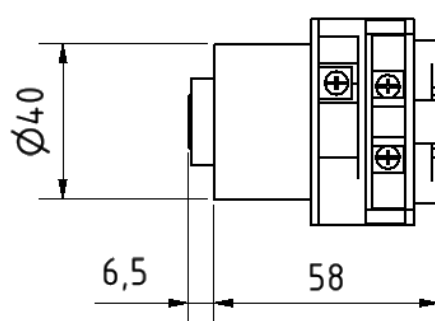
optionally possible 4kt 8x8 reinforced
3kt 6.9mm, half-round 13mm, Southco tube



Length 29 + number of elements x 10mm
= 39mm for one element

Key actuation KABA 1008C/25

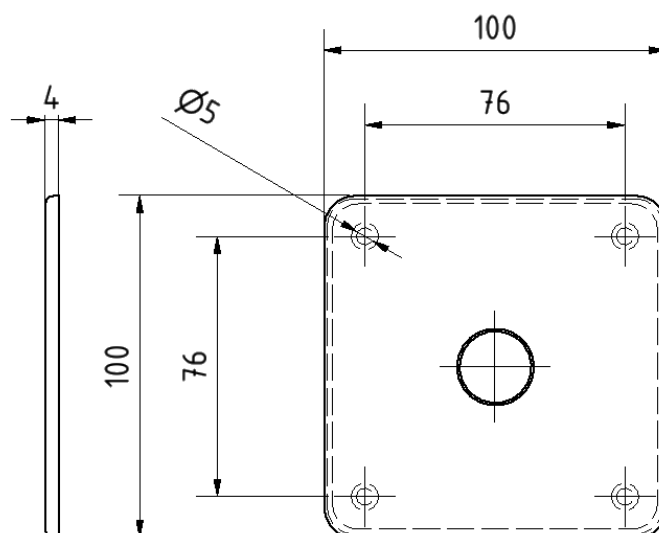
optionally possible KESO, SEA, IKON, EVVA, DOM



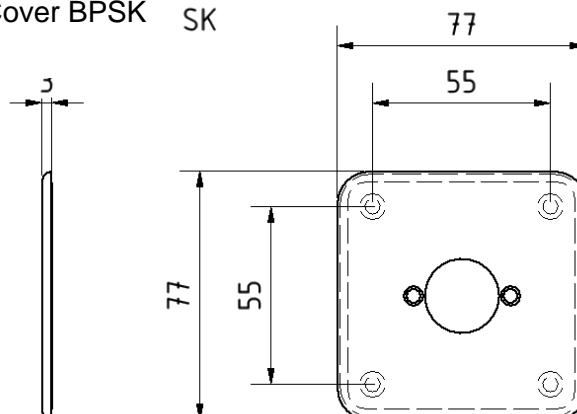
Length 48 + number of elements x 10mm
= 58mm for one element

Switch can be combined with all rosettes, or without rosette for direct mounting

Cover BPS



Cover BPSK SK



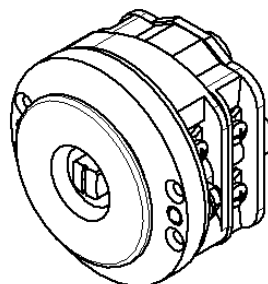
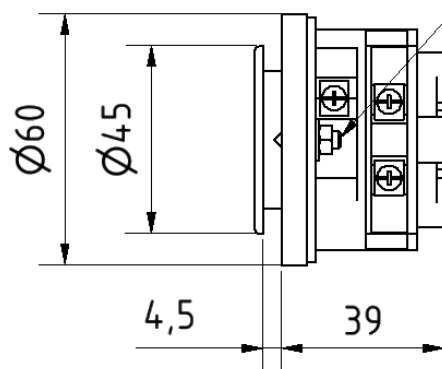
Natural or black anodised aluminium rosette according to customer requirements

Laser engraving of the position according to customer requirements

Special version BS Key actuation 4kt 8x8

optionally possible 4kt 8x8 reinforced
3kt 6.9mm, half-round 13mm, Southco tube

Tapered pin for fixing

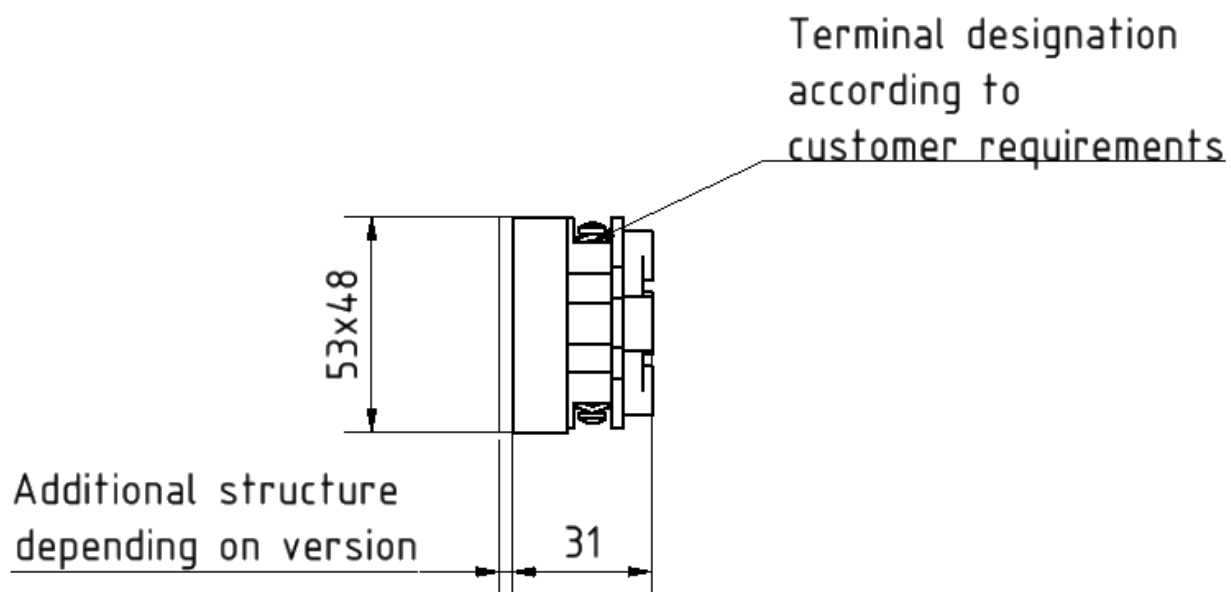


Length 29 + number of elements x 10mm
= 39mm for one element

Front ring in anodised aluminium or stainless steel possible according to customer requirements
Laser engraving of the position according to customer requirements

6 Manual switch

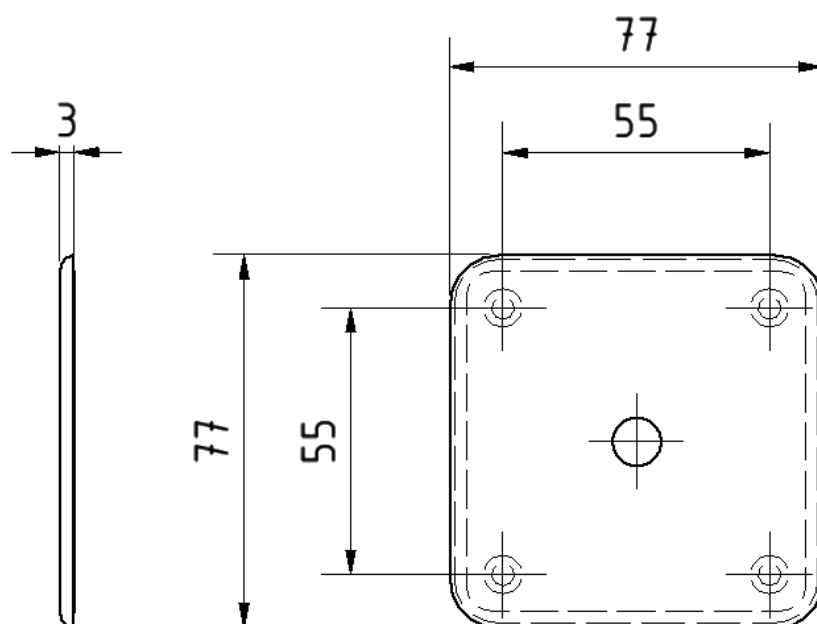
Basic switch



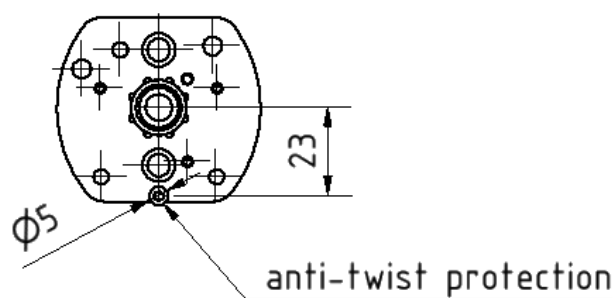
Length $21 + \text{number of elements} \times 10\text{mm}$
= 31mm for one element

6.1 Mounting options

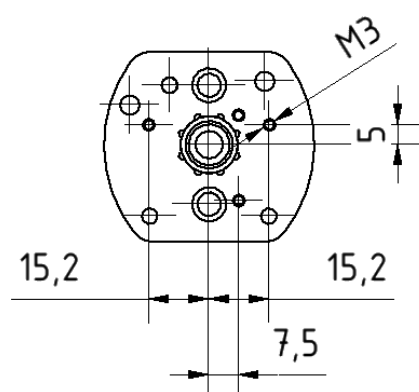
Cover



Switch without rosette, with anti-twist protection

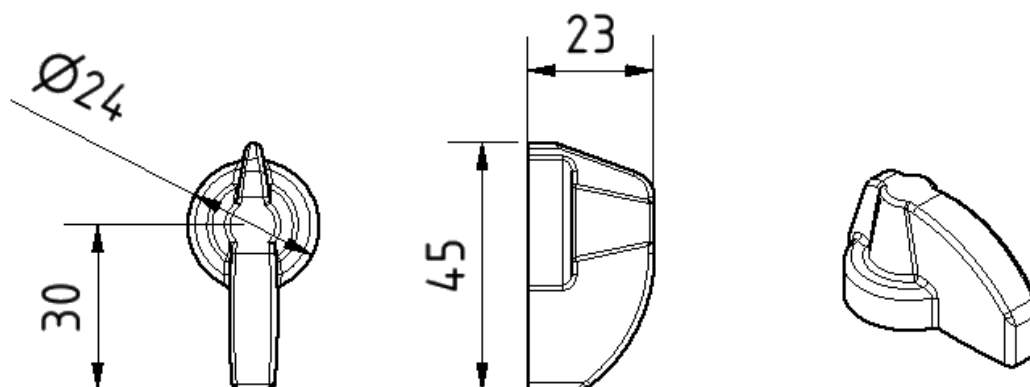


Switch without rosette, with mounting thread

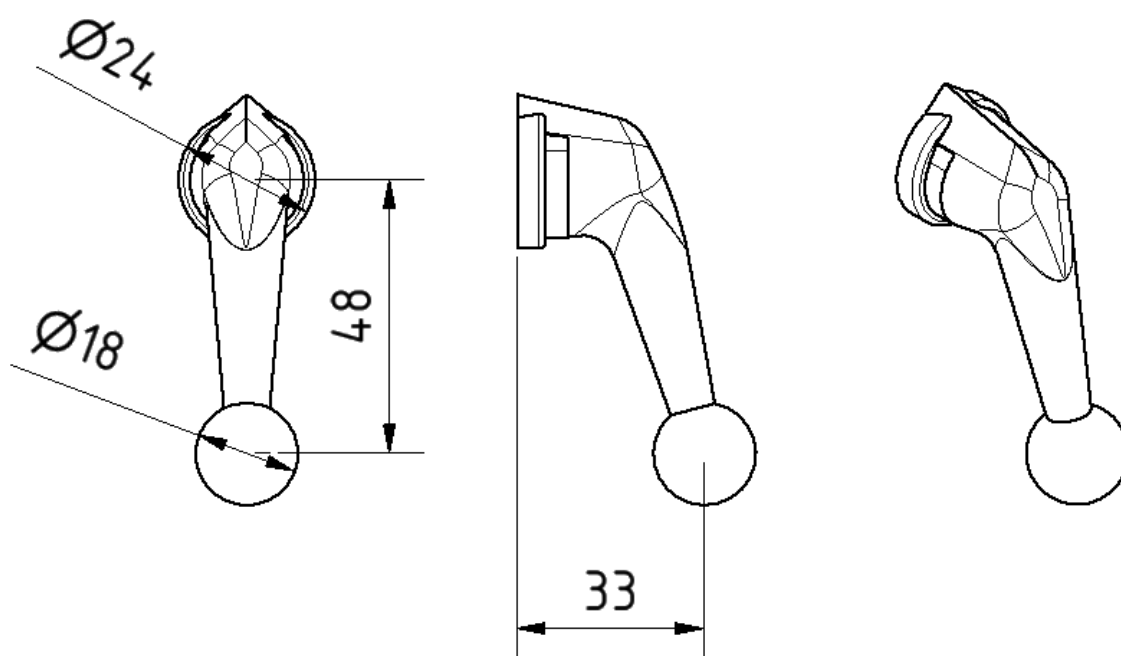


6.2 Handle variants

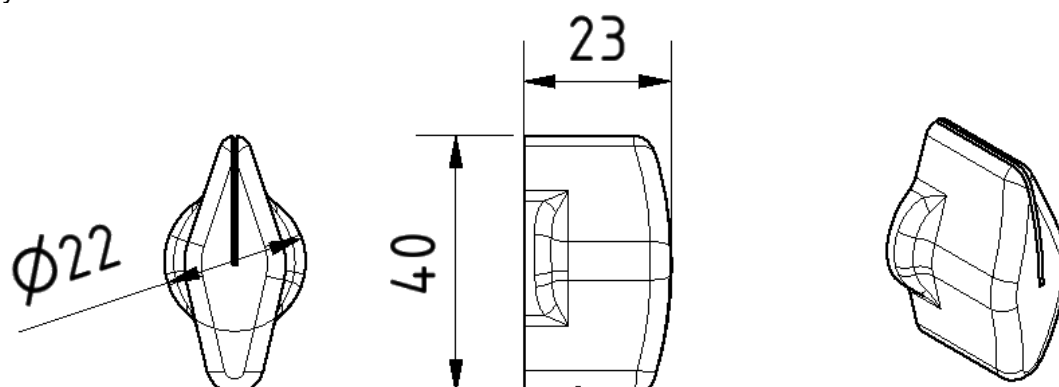
P-Handle



Ball-handle

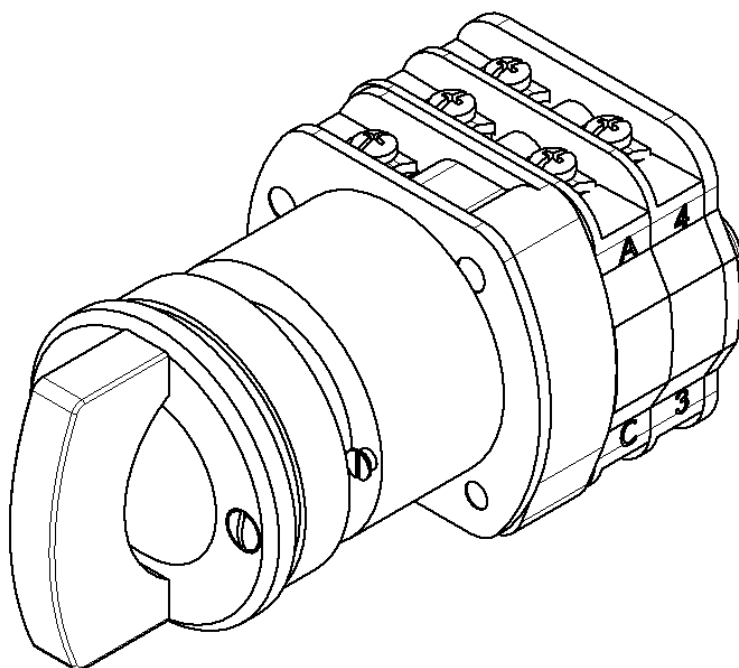


Rotary handle

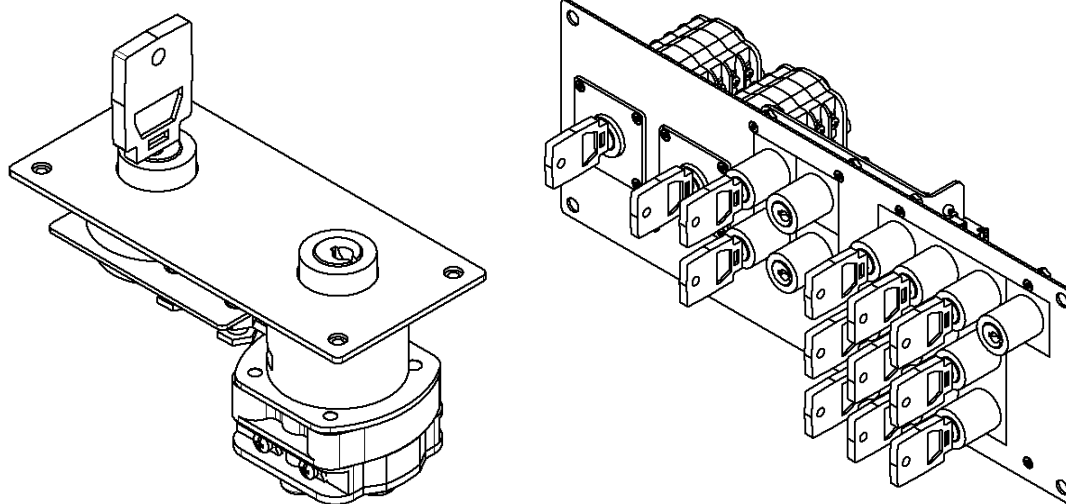


7 Special versions

BSQ acknowledgement switch with integrated LED lighting



Switch with additional locking logic or integration in key multiplier also possible with wiring to plug





Important notice

Our experience has shown that, if the information and recommendations contained in this „Operating instruction“ are observed, the best possible reliability of our products is assured.

The data contained herein purports solely to describe the product and is not a warranty of performance or characteristics. It is with the best interests of our customers in mind that we constantly strive to improve our products and keep them abreast of advances in technology. This may, however, lead to discrepancies between a product and its „Technical description“ or „Operating instructions“.

This document has been carefully prepared and reviewed, however should in spite of this the reader find an error, he is requested to inform us at his earliest convenience.

It is scarcely possible for the operating instructions for technical equipment to cover every eventuality which can occur in practice. We would therefore request you to notify us or our agent in the case of all unusual behavior, which does not appear to be covered by these operating instructions.

It is pointed out that all local regulations must be observed when connecting and commissioning this equipment in addition to these operating instructions.

Any work that has to be carried out inside the equipment, such as changing soldered links or fitting or removing resistors, may only be performed by correspondingly qualified personnel.

We cannot accept any responsibility for damage incurred as a result of mishandling the equipment regardless of whether particular reference is made in these operating instructions or not.

We lay particular stress on the fact that only genuine spare parts should be used for replacements.

All rights with respect to this document, including applications for patent and registration of other industrial property rights, are reserved. Unauthorized use, in particular reproduction or making available to third parties, is prohibited.

Spring AG
Bahnhofstrasse 105
CH - 5430 Wettingen

Tel.	056 / 426 66 88
Fax	056 / 426 03 72
e-mail	info@spring-ltd.ch
Homepage	www.spring-ltd.ch