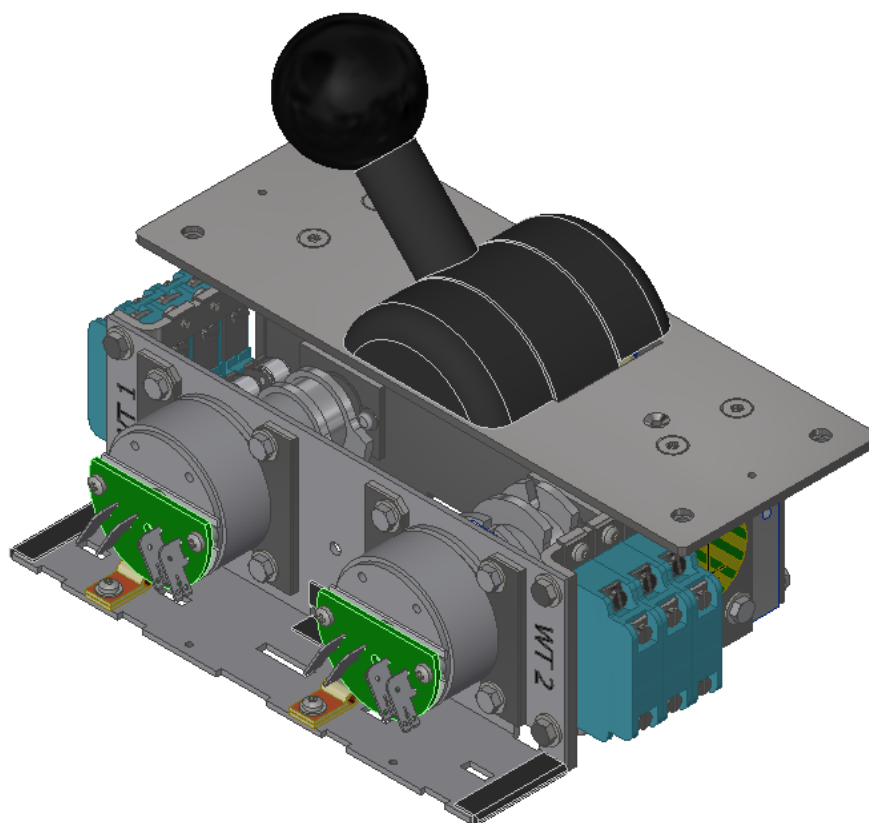


Railway - Master controllers and brake controllers



| | | |
|----|---|---|
| 1 | Main features, use | 2 |
| 2 | Technical data | 2 |
| 3 | Storage | 2 |
| 4 | Drawings..... | 2 |
| 5 | Single master controller | 3 |
| 6 | drive/brake switches with additional switches | 4 |
| 7 | Control lever | 4 |
| 8 | master controller for simulators..... | 5 |
| 9 | Controller | 5 |
| 10 | Control switch panel | 6 |



1 Main features, use

The master controller designed according to our customers' requirements can be adapted to a wide variety of situations. Whether just one operating lever for the brake and traction force or integrated interlocks with direction of travel or key switches can be individually designed. Additional angle transmitters or potentiometers can also provide a digital or analog signal.

2 Technical data

- Auxiliary contacts for various currents and voltages
- Angle transmitter or potentiometer
- Integration of additional switches
- SIFA functions can be integrated
- Push-button switch in the handle
- Further electrical and mechanical data, complied standards and tests available on request.

3 Storage

The master controllers must be stored in a dry place and protected from dust.

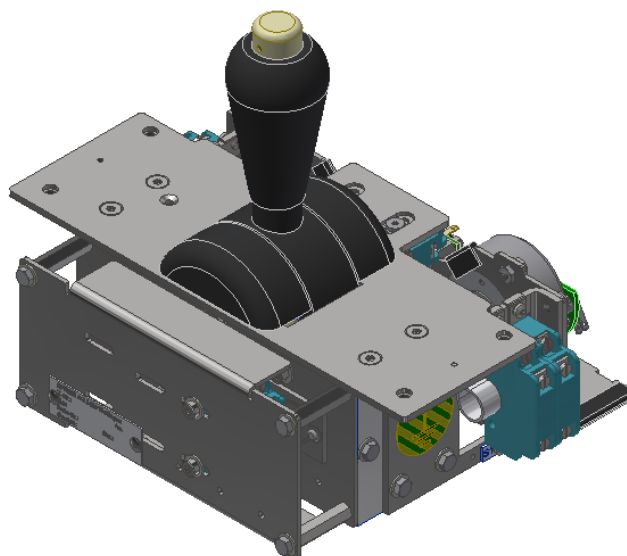
4 Drawings

A documentation set containing the following information is created for each master controller:

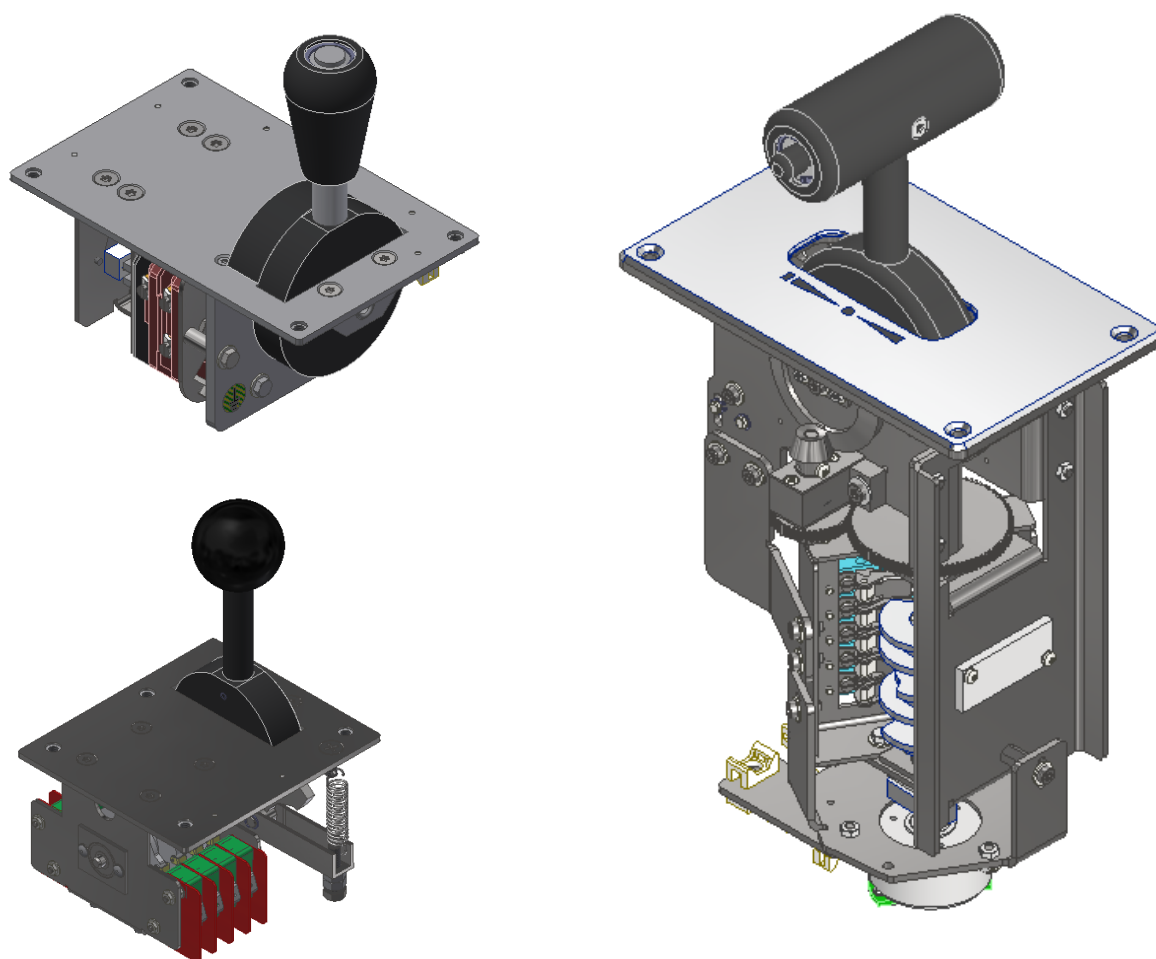
Dimension drawing
3D model
Test instructions
Documentation

Further documents such as fire protection certificates according to EN45545, lists of hazardous substances or spare parts lists can also be supplied at the customer's request..

5 Single master controller

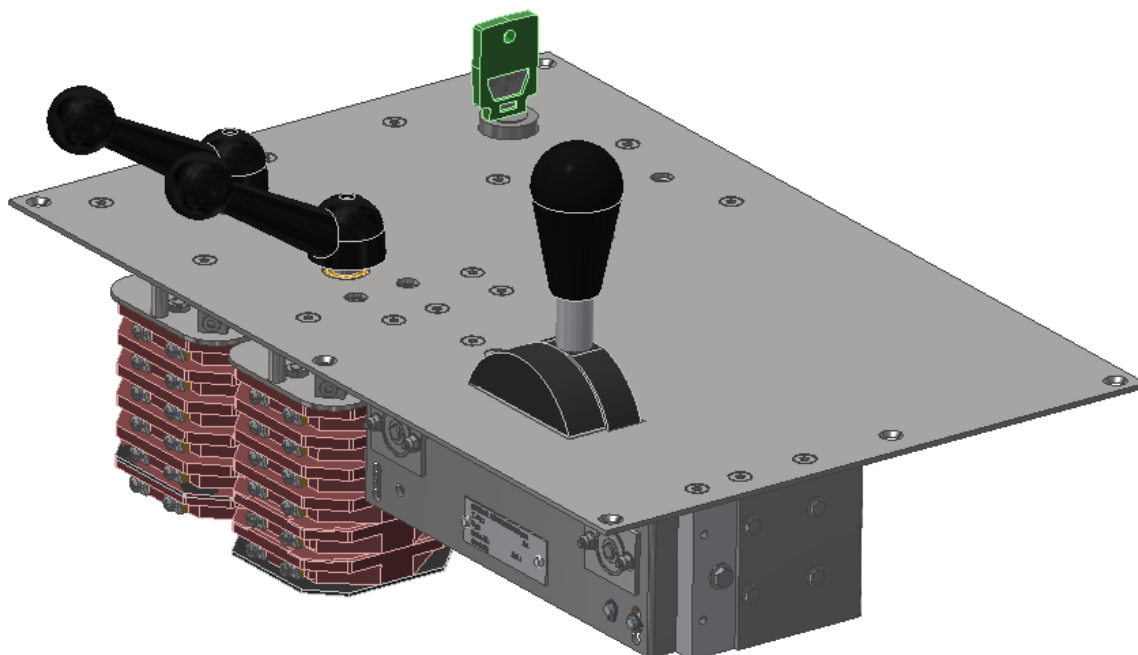


Master controller with interlocked tractive force range, actuation monitored, with auxiliary contact. Lever position via 4-20mA signal and additional auxiliary contacts



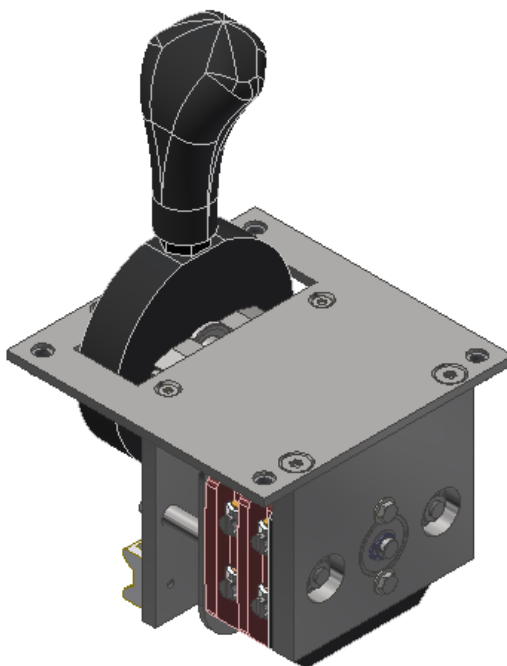
Different versions

6 Drive/brake switches with additional switches



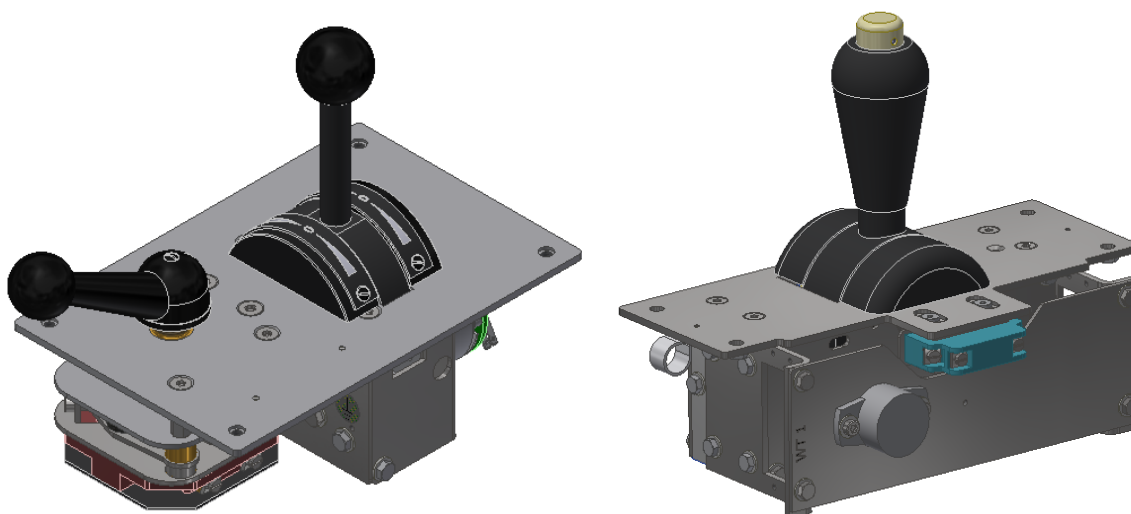
Can be combined with key switch, commissioning switch and direction switch.
Levers and switches can be interlocked according to customer requirements

7 Control lever

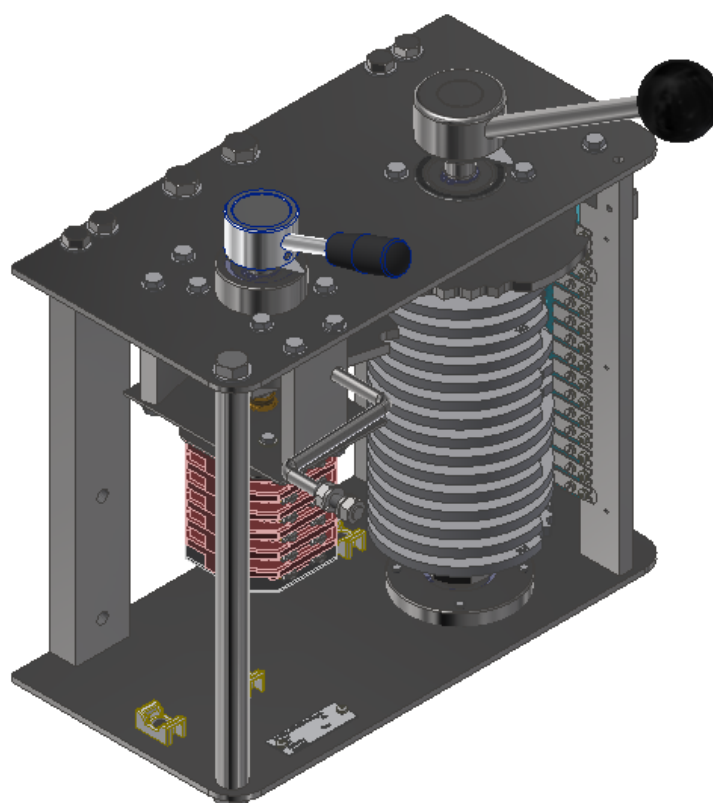


Simple operating lever with latching or push-button positions

8 Master controller for simulators

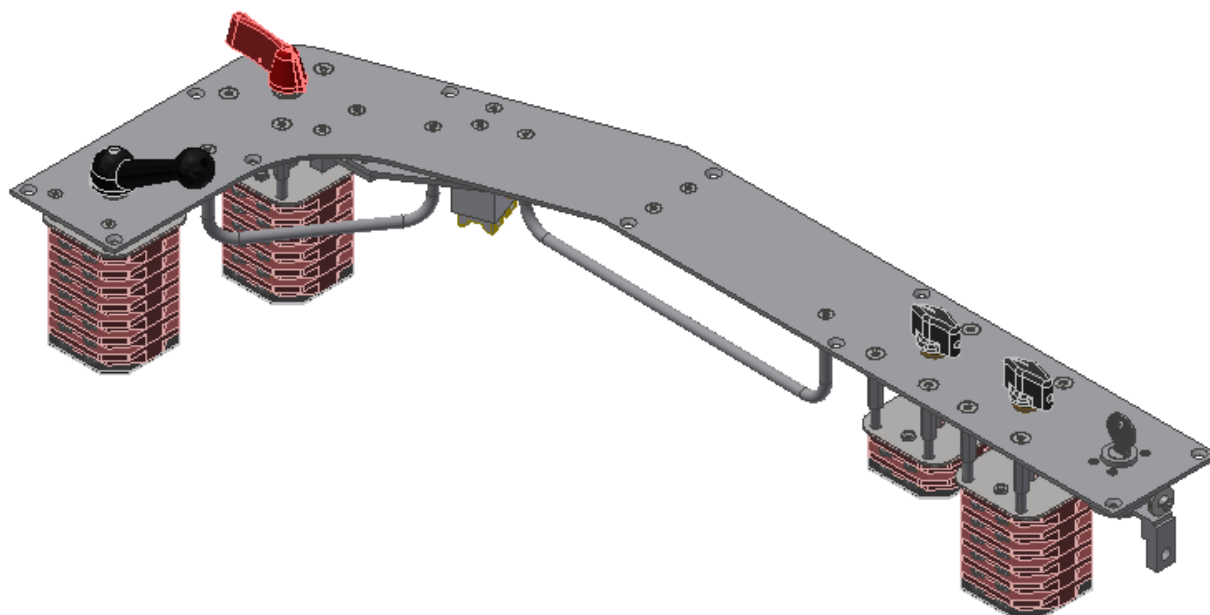


9 Controller



controller conventional

10 Control switch panel



Control panel with various interlockable manual switches



Important notice

Our experience has shown that, if the information and recommendations contained in this „Operating instruction“ are observed, the best possible reliability of our products is assured.

The data contained herein purports solely to describe the product and is not a warranty of performance or characteristics. It is with the best interests of our customers in mind that we constantly strive to improve our products and keep them abreast of advances in technology. This may, however, lead to discrepancies between a product and its „Technical description“ or „Operating instructions“.

This document has been carefully prepared and reviewed, however should in spite of this the reader find an error, he is requested to inform us at his earliest convenience.

It is scarcely possible for the operating instructions for technical equipment to cover every eventuality which can occur in practice. We would therefore request you to notify us or our agent in the case of all unusual behavior, which does not appear to be covered by these operating instructions.

It is pointed out that all local regulations must be observed when connecting and commissioning this equipment in addition to these operating instructions.

Any work that has to be carried out inside the equipment, such as changing soldered links or fitting or removing resistors, may only be performed by correspondingly qualified personnel.

We cannot accept any responsibility for damage incurred as a result of mishandling the equipment regardless of whether particular reference is made in these operating instructions or not.

We lay particular stress on the fact that only genuine spare parts should be used for replacements.

All rights with respect to this document, including applications for patent and registration of other industrial property rights, are reserved. Unauthorized use, in particular reproduction or making available to third parties, is prohibited.

Spring AG
Bahnhofstrasse 105
CH - 5430 Wettingen

| | |
|----------|--------------------|
| Tel. | 056 / 426 66 88 |
| Fax | 056 / 426 03 72 |
| e-mail | info@spring-ltd.ch |
| Homepage | www.spring-ltd.ch |