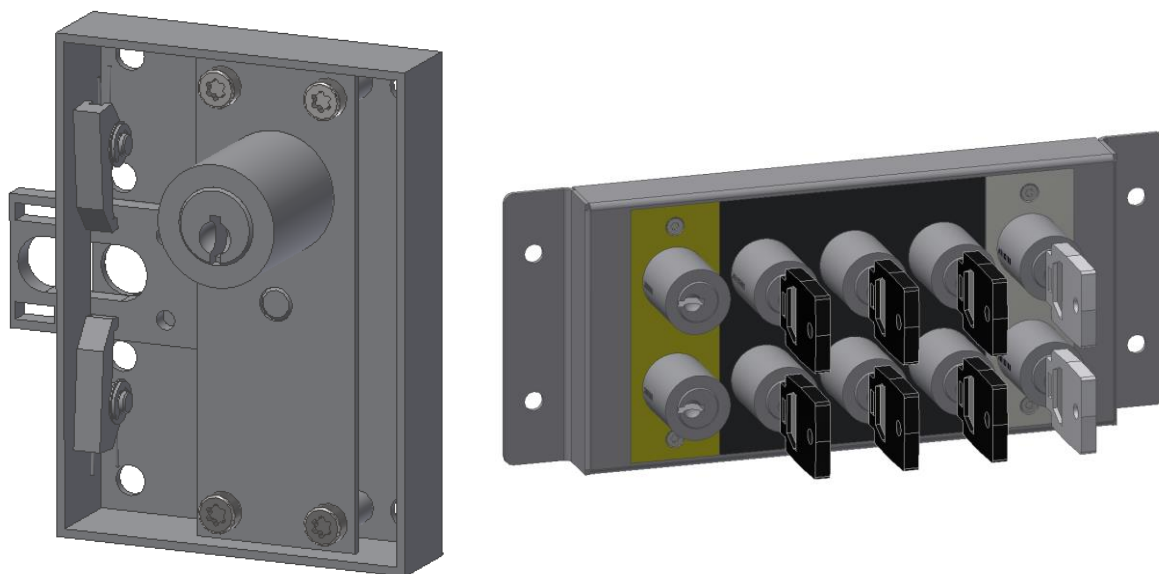


Interlocks

Key concepts



1	Main features, use.....	2
2	Maintenance.....	2
3	Drawings	2
4	Door locks	3
4.1	Rim locks	3
4.3	Sheet metal locks.....	4
5	Key multiplier.....	5
6	Key locks / Key changer	7
7	Shaft interlocks.....	8
8	Cable interlocks.....	9
9	Pantograv disconnecter.....	10



1 Main features, use

To ensure the security of a system, operating devices and doors are secured with locks and can only be operated with the corresponding keys for the respective level.

Spring AG offers various components which can be used for an interlocking concept. These include door locks and counterparts or key multipliers and interlocks.

2 Maintenance

The key multipliers and door locks are maintenance-free. Complex superstructures must be maintained in accordance with the maintenance instructions. Heavily soiled locks and keys must be cleaned.

3 Drawings

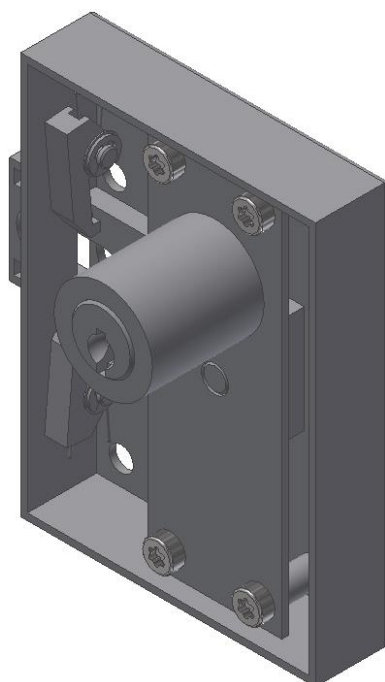
A documentation set containing the following information is created for each interlock:

Dimensional drawing
3D model
Test instruction
Documentation

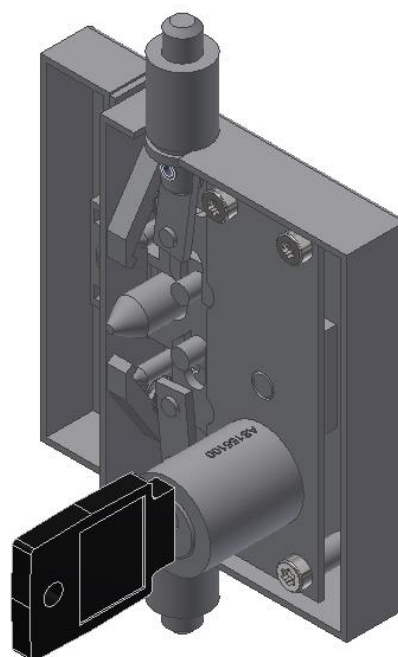
Further documents such as fire protection certificates according to EN45545, lists of hazardous substances or spare parts lists can also be supplied at the customer's request.

4 Door locks

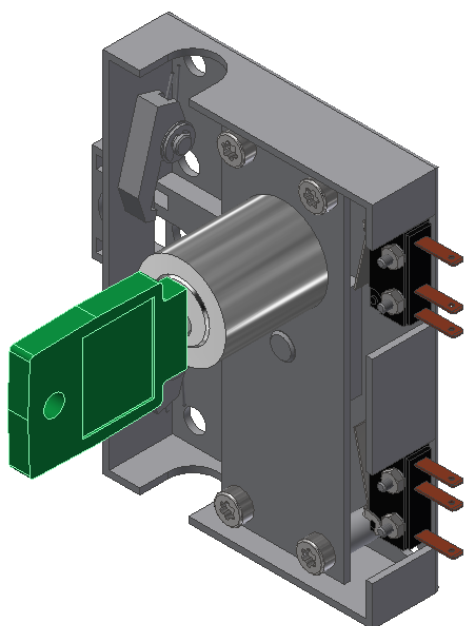
4.1 Rim locks



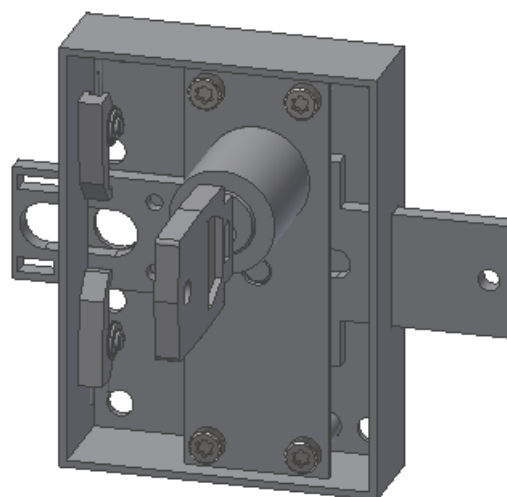
Standard door lock



Door lock with rod connection



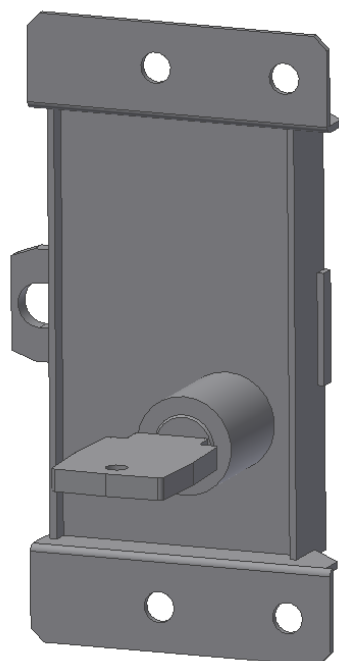
Door lock with monitoring contacts



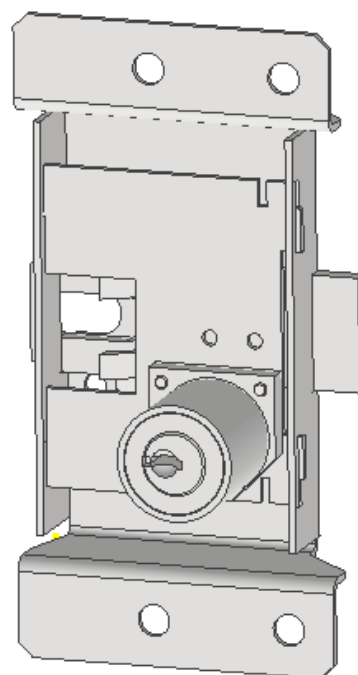
Double deadbolt door lock

All door locks available in left or right-hand versions, counterparts available in various versions, standard KABA cylinder, optional KESO, SEA, IKON, EVVA, DOM

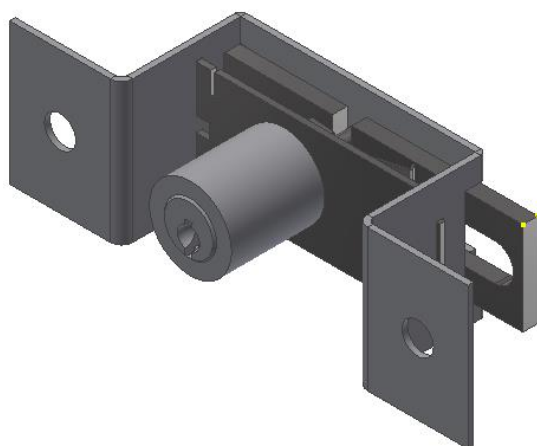
4.3 Sheet metal locks



Standard version



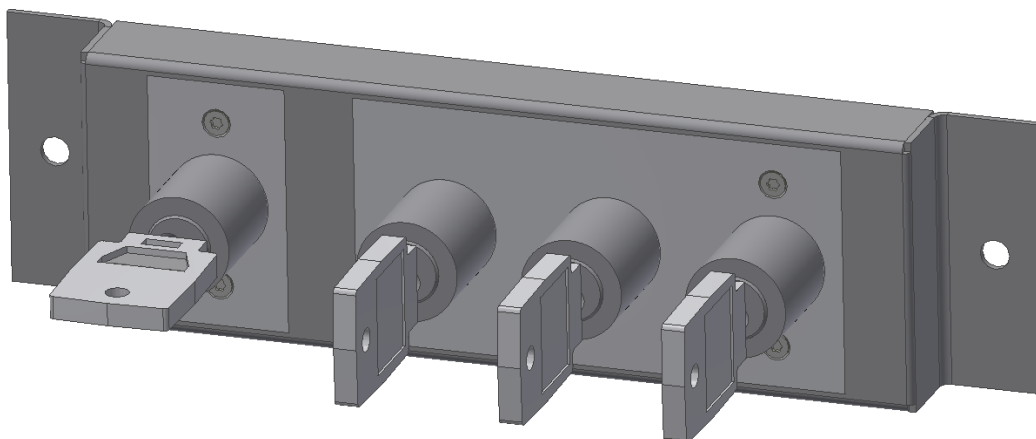
Version with IP54 degree of protection



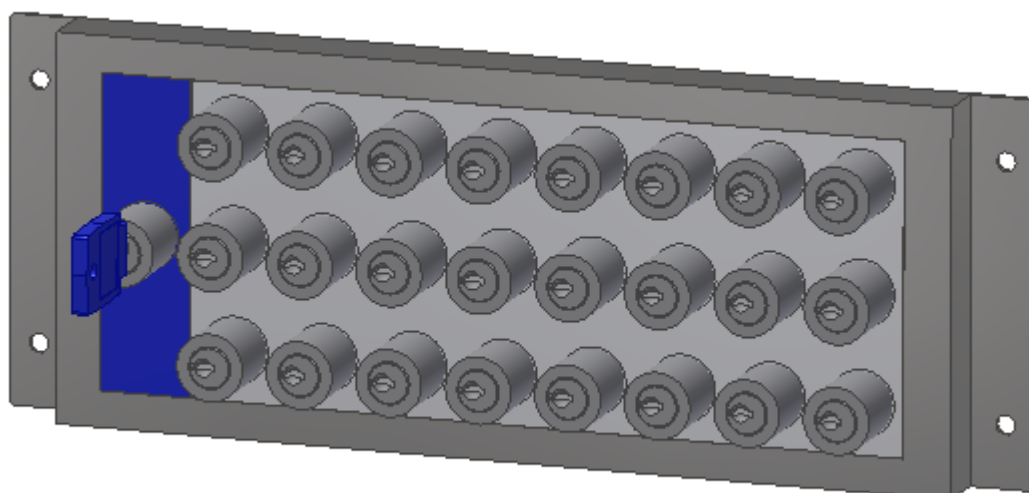
Small door lock

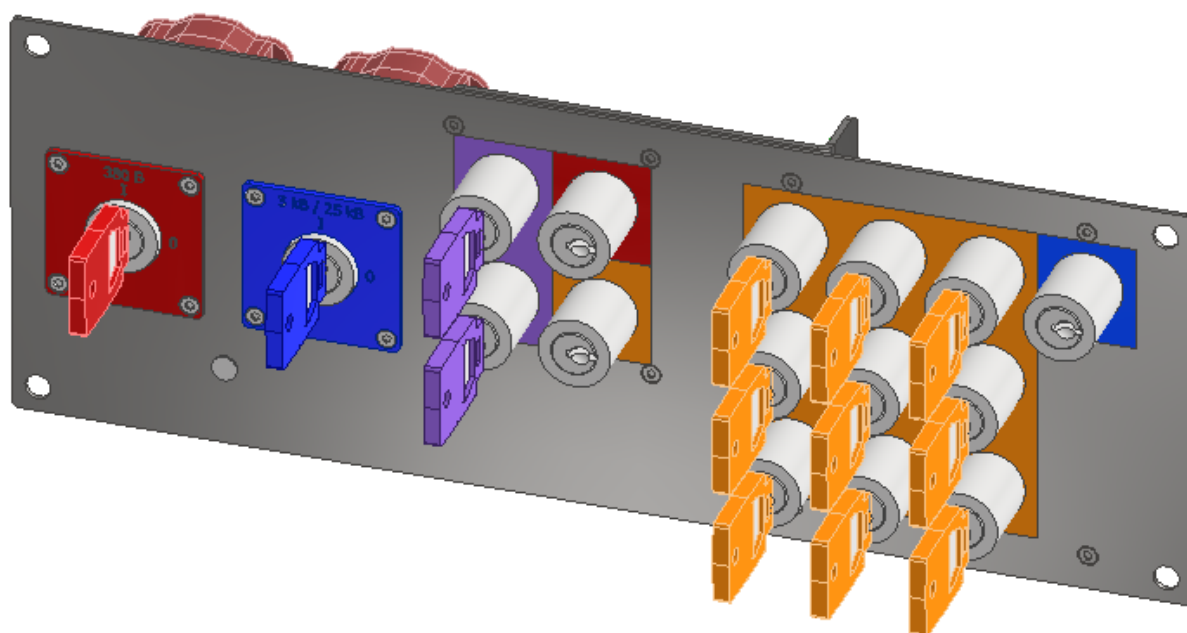
All door locks available in left or right-hand versions, counterparts available in various versions, standard KABA cylinder, optional KESO, SEA, IKON, EVVA, DOM

5 Key multiplier

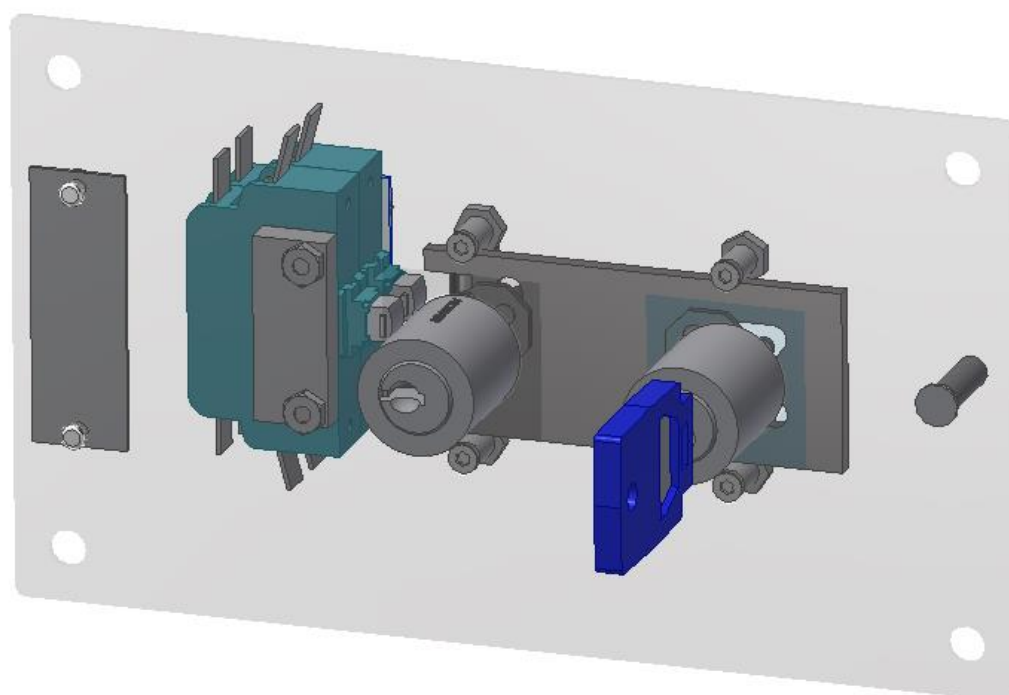


Key multiplier designed according to customer requirements





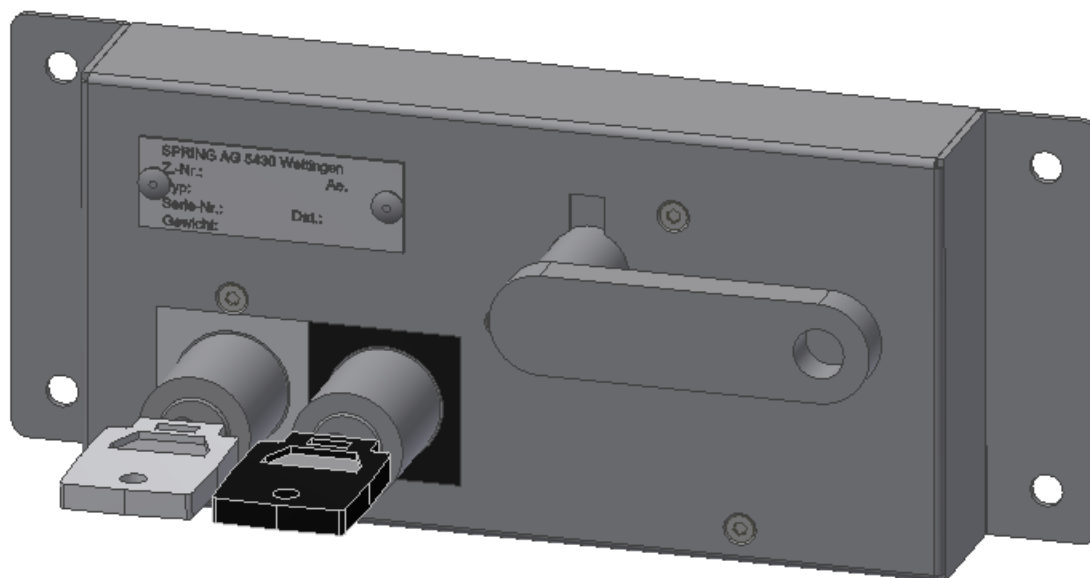
Multi-stage with switch and wiring



With auxiliary contacts

Cylinder standard KABA, optionally possible KESO, SEA, IKON, EVVA, DOM

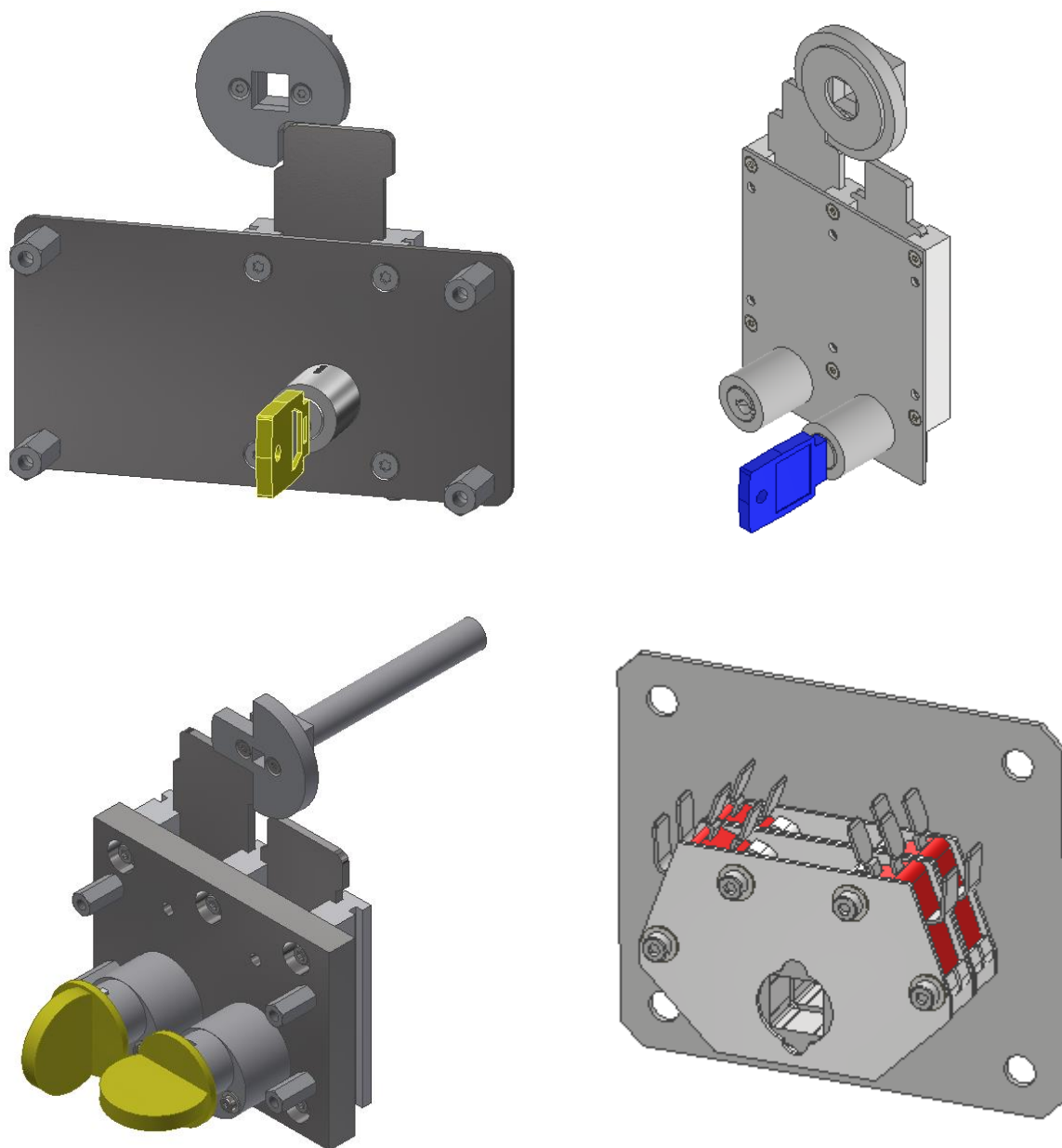
6 Key locks / Key changer



For example, locking devices for UIC or 4 edge keys

Cylinder standard KABA, optionally possible KESO, SEA, IKON, EVVA, DOM

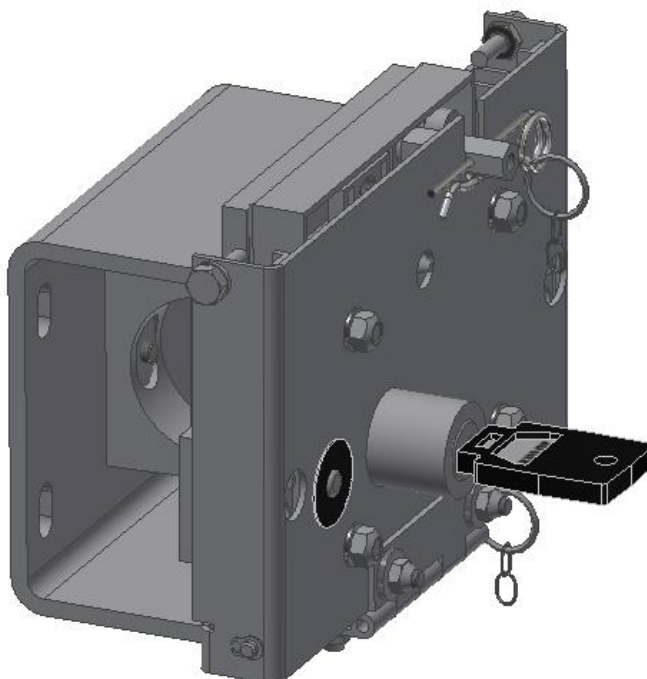
7 Shaft interlocks



Different variants for locking shafts, also with optional position monitoring

Cylinder standard KABA, optionally possible KESO, SEA, IKON, EVVA, DOM

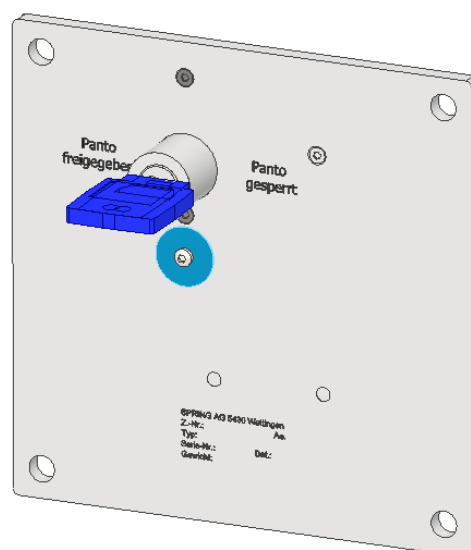
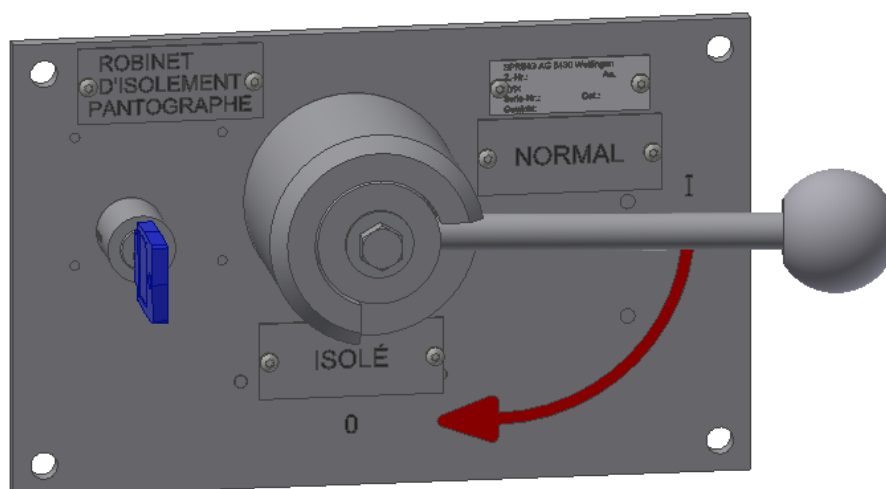
8 Cable interlocks



Various solutions for securing cables

Cylinder standard KABA, optionally possible KESO, SEA, IKON, EVVA, DOM

9 Pantograv disconnecter



Actuation of the pneumatic valve possible via lever or directly with key



Important notice

Our experience has shown that, if the information and recommendations contained in this „Operating instruction“ are observed, the best possible reliability of our products is assured.

The data contained herein purports solely to describe the product and is not a warranty of performance or characteristics. It is with the best interests of our customers in mind that we constantly strive to improve our products and keep them abreast of advances in technology. This may, however, lead to discrepancies between a product and its „Technical description“ or „Operating instructions“.

This document has been carefully prepared and reviewed, however should in spite of this the reader find an error, he is requested to inform us at his earliest convenience.

It is scarcely possible for the operating instructions for technical equipment to cover every eventuality which can occur in practice. We would therefore request you to notify us or our agent in the case of all unusual behavior, which does not appear to be covered by these operating instructions.

It is pointed out that all local regulations must be observed when connecting and commissioning this equipment in addition to these operating instructions.

Any work that has to be carried out inside the equipment, such as changing soldered links or fitting or removing resistors, may only be performed by correspondingly qualified personnel.

We cannot accept any responsibility for damage incurred as a result of mishandling the equipment regardless of whether particular reference is made in these operating instructions or not.

We lay particular stress on the fact that only genuine spare parts should be used for replacements.

All rights with respect to this document, including applications for patent and registration of other industrial property rights, are reserved. Unauthorized use, in particular reproduction or making available to third parties, is prohibited.

Spring AG
Bahnhofstrasse 105
CH - 5430 Wettingen

Tel.	056 / 426 66 88
Fax	056 / 426 03 72
e-mail	info@spring-ltd.ch
Homepage	www.spring-ltd.ch